



Unit 1/31 Alliance Avenue, Morisset NSW 2264

sales@hunterofficesupplies.com.au

P 02 4973 1313 F 02 4973 6035

www.hunterofficesuppliesmorisset.com.au

Commercial Furniture Catalogue



OFFICE CHAIRS



RECEPTION SEATING



LOGAN RANGE



SUMMIT RANGE



VENTURA RANGE

Hunter Office Supplies

Unit 1/31 Alliance Avenue, Morisset NSW 2264

sales@hunterofficesupplies.com.au

www.hunterofficesuppliesmorisset.com.au

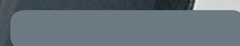
P 02 4973 1313

F 02 4973 6035



Contents

OFFICE CHAIRS	2
RECEPTION SEATING	22
LOGAN RANGE	23
SUMMIT RANGE	28
VENTURA RANGE	33



Executive

Miami II: Product Code **YS113**

Miami II | The contemporary Miami II chair is perfect for the person who appreciates both comfort & style.

The Miami II is the next level of design comfort and ergonomics. With a larger Back and Seat than its Predecessor. The Miami II also comes with Ratchet Height Adjustable Back and Seat slide.



Miami II | Product Code **YS113**

Features:

- ✓ High Back
- ✓ Adjustable Seat Height
- ✓ Tension Adjustment
- ✓ Molded Foam Seat with Mesh Back
- ✓ Ratchet Height Adjustable Back
- ✓ Large Breathable Mesh Back with Large Molded Seat
- ✓ Tested to AS/NZS4438:1997+A1:1999 – height adjustable swivel chair Level 6
- ✓ Nylon Star Base



Adjustment:



Miami II with Arms | Product Code **YS113A**

All features as above, plus:

- ✓ Optional Adjustable Arms
- Available in black.

7
YEAR
WARRANTY

150
kg USER
RATING

3
LEVER WITH
SEAT SLIDE

Dimensions:

	Seat Size	Back Size	Chair height to back	Chair height to seat	Seating Time	Carton Size	Carton Weight
YS113	540W x 485D	440W – 520H	895mm – 985mm	455mm – 545mm	8 hrs+	693 x 458 x 660	26.4Kg
YS113A	540W x 485D	440W – 520H	895mm – 985mm	455mm – 545mm	8 hrs+	693 x 458 x 660	26.4Kg

Chairs

Miami: Product Code **YS13**

Miami | Aesthetically stunning from every angle the Miami is designed to match the most stylish office interiors.

Miami is a modern ergonomic task chair with all the features you'll ever need already built in. Seat slide, molded foam and breathable mesh are just some of the features that head up an office chair developed for both look and comfort.



Adjustment:



Seat can slide back and forth



The front of the seat can be adjusted upward



Armrest height adjustable

Miami | Product Code **YS13**

Features:

- ✓ Medium Back
- ✓ Adjustable Seat Height
- ✓ Tension Adjustment
- ✓ Molded Foam Seat with Mesh Back

Miami with Arms | Product Code **YS13A**

All features as above, plus:

- ✓ Optional Adjustable Arms

Available in black.

5
YEAR
WARRANTY

120
kg USER
Rating

3
LEVER WITH
SEAT SLIDE

Dimensions:

	Seat Size	Back Size	Chair height to back	Chair height to seat	Seating Time	Carton Size	Carton Weight
YS13	495W x 490D	480W x 495H	1015mm – 1090mm	490mm – 565mm	8 hrs+	720 x 400 x 655	19.4Kg
YS13A	495W x 490D	480W x 495H	1015mm – 1090mm	490mm – 565mm	8 hrs+	720 x 400 x 655	22Kg

Executive

Liberty: Product Code **YS0220**

Liberty | Liberty Mesh incorporates a sleek design wrapped in a grey white polypropylene frame.

The beautifully woven mesh provides good ventilation, and a natural fit for the human body.



Liberty | Product Code **YS0220**

Features:

- ✓ Black Mesh Back
- ✓ Black upholstered Seat
- ✓ Adjustable Arm Rest
- ✓ Knee Tilt Mech lockable in 4 position
- ✓ Tension Adjustment
- ✓ Grey white frame and Nylon Base
- ✓ PU castors

Available in black.

5
YEAR
WARRANTY

120
kg USER
RATING

Dimensions:

	Seat Size	Back Size	Chair height to back	Chair height to seat	Seating Time	Carton Size	Carton Weight
YS0220	480W x 460D	490Wx500H	925mm – 1020mm	455mm – 525mm	8 hrs+	762 x 324 x 630	16.10Kg

Alamo: Product Code YS0232

Alamo | Alamo has a neat and elegant design aimed to meet any office look and budget.

Ethereal lines flowing through the armrest accompanying a grey white frame giving a different visual aspect to your working environment.



Alamo | Product Code YS0232

Features:

- ✓ Grey Mesh Back
- ✓ Black upholstered fabric seat
- ✓ Grey white frame and nylon base
- ✓ Simple Swivel and tilt mech
- ✓ Fixed arms
- ✓ Adjustable Lumber Support

Available in grey/black.



Dimensions:

	Seat Size	Back Size	Chair height to back	Chair height to seat	Seating Time	Carton Size	Carton Weight
YS0232	475W x 460D	465W x 450H	880mm – 970mm	420mm – 510mm	8 hrs+	616 x 330 x 590	12.3Kg

Executive



Our mesh back chairs are cleverly designed with comfort and looks in mind and manufactured using the highest quality materials.

Denmark | Product Code YSo203

Features:

- ✓ Medium Back
- ✓ Adjustable Seat Height
- ✓ 3D Adjustable Arms
- ✓ Adjustable Lumbar
- ✓ Mesh Back & Fabric Seat

■ Available in black.

5
YEAR
WARRANTY

120
kg USER
Rating

3D
ADJUSTABLE
ARMS

Galaxy | Product Code YSo203H

Features:

- ✓ High Back
- ✓ Adjustable Seat Height
- ✓ Optional Adjustable Arms
- ✓ Tension Adjustment
- ✓ PU upholstered Seat with Mesh Back

■ Available in black.

5
YEAR
WARRANTY

120
kg USER
Rating

3D
ADJUSTABLE
ARMS

Dimensions:

	Seat Size	Back Size	Chair height to back	Chair height to seat	Seating Time	Carton Size	Carton Weight
YSo203	465W x 535D	495W x 510H	975mm – 1045mm	465mm – 535mm	8 hrs+	769 x 324 x 629	22.5Kg
YSo203H	465W x 535D	495W x 755H	1220mm – 1290mm	465mm – 535mm	8 hrs+	826 x 381 x 661	25Kg



Vegas | The ultra contemporary Vegas chair is perfect for the person who appreciates the finer things in life.



Vegas High Back | Product Code **YS0207H**

Features:

- ✓ High Back with headrest
- ✓ Adjustable Seat Height
- ✓ Adjustable Back Height
- ✓ Lockable Synchro Mechanism
- ✓ Tension Adjustment
- ✓ Mesh Back and PU Seat
- ✓ Adjustable Seat Slide
- ✓ 4D Adjustable Arms
- ✓ Ratchet Back height Adjustment with Moveable Lumber

■ Available in black.

5
YEAR
WARRANTY

120
kg USER
Rating

4D
ADJUSTABLE
ARMS

Vegas Medium Back |

Product Code **YS0207M**

Features:

- ✓ Medium Back
- ✓ Adjustable Seat Height
- ✓ Adjustable Back Height
- ✓ Lockable Synchro Mechanism
- ✓ Tension Adjustment
- ✓ Mesh Back and PU Seat
- ✓ Adjustable Seat Slide
- ✓ 4D Adjustable Arms
- ✓ Ratchet Back height Adjustment with Moveable Lumber

■ Available in black.

5
YEAR
WARRANTY

120
kg USER
Rating

4D
ADJUSTABLE
ARMS

Dimensions:

	Seat Size	Back Size	Chair height to back	Chair height to seat	Seating Time	Carton Size	Carton Weight
YS0207H	480W x 490D	480W x 715H	1115mm – 1225mm	440mm – 510mm	8 hrs+	980 x 610 x 585	26Kg
YS0207M	480W x 490D	480W x 525H	965mm – 1035mm	440mm – 510mm	8 hrs+	820 x 623 x 585	26Kg

Executive

Georgia | Product Code YS201

Features:

- ✓ High Back
- ✓ Adjustable Seat Height
- ✓ Padded Fixed Arms
- ✓ Tension Adjustment
- ✓ PU
- ✓ Infinite Tilt Lockable Mechanism
- ✓ Chrome Base

Available in black.

5
YEAR
WARRANTY

120
kg USER
Rating



Commander | Product Code YS03PU

Features:

- ✓ High Back
- ✓ Adjustable Seat Height
- ✓ Fixed Arms
- ✓ Tension Adjustment
- ✓ PU
- ✓ Free Float or Lock Mechanism
- ✓ Nylon Star Base

Available in black.

5
YEAR
WARRANTY

120
kg USER
Rating

Capri | Product Code YS333

Features:

- ✓ High Back
- ✓ Adjustable Seat Height
- ✓ Fixed Padded Arms
- ✓ Tension Adjustment
- ✓ PU
- ✓ Free Float or Lock Mechanism

Available in black.

5
YEAR
WARRANTY

120
kg USER
Rating

Dimensions:

	Seat Size	Back Size	Chair height to back	Chair height to seat	Seating Time	Carton Size	Carton Weight
YS201	530W x 500D	510W x 740H	1100mm – 1175mm	510mm – 585mm	8 hrs+	810 x 315 x 655	21.3Kg
YS03PU	520W x 505D	520W x 780H	1165mm – 1255mm	495mm – 585mm	8 hrs+	775 x 360 x 655	19Kg
YS333	500W x 485D	495W x 665H	1060mm – 1150mm	480mm – 570mm	8 hrs+	695 x 310 x 585	16Kg

Chairs

Houston | Product Code YS22

Features:

- ✓ High Back
- ✓ Adjustable Seat Height
- ✓ Fixed Arms

■ Available in black.

5
YEAR
WARRANTY

120
kg USER
Rating



XR8 | Product Code YSXR8

Features:

- ✓ High Back
- ✓ Adjustable Seat Height
- ✓ Padded Fold Back Arms
- ✓ Comfortable Headrest
- ✓ PU
- ✓ Free Float or Lock Mechanism
- ✓ Tension Adjustment

■ Available in black with red trim.

5
YEAR
WARRANTY

120
kg USER
Rating



Preston PU | Product Code YS46PU

Features:

- ✓ High Back
- ✓ Adjustable Seat Height
- ✓ Seat Tilt
- ✓ Adjustable Arms
- ✓ PU
- ✓ Ratchet Adjustable Back Height
- ✓ Adjustable Back Tilt
- ✓ Nylon Base

■ Available in black.

5
YEAR
WARRANTY

120
kg USER
Rating

Dimensions:

	Seat Size	Back Size	Chair height to back	Chair height to seat	Seating Time	Carton Size	Carton Weight
YS22	530Wx490D	520W x 750H	1090mm – 1180mm	495mm – 585mm	8 hrs+	800 x 350 x 655	20.1Kg
YSXR8	550Wx500D	530W x 775H	1155mm – 1245mm	475mm – 565mm	4 – 8hrs	780 x 370 x 655	18.3Kg
YS46PU	510Wx475D	475W x 610H	1080mm – 1170mm	485mm – 575mm	8 hrs+	825 x 390 x 655	23Kg

Executive



Statesman | Product Code **YS20**

Features:

- ✓ High Back
- ✓ Adjustable Seat Height
- ✓ Padded Fixed Arms
- ✓ Leather/PU
- ✓ Tension Adjustment
- ✓ Infinite Tilt Lockable Mechanism

■ Available in black.



Star Medium Back | Product Code **YS111M**

Features:

- ✓ Medium Back
- ✓ PU
- ✓ Adjustable Seat Height
- ✓ Free Float or Lock Mechanism
- ✓ Tension Adjustment

■ Available in black.



Star High Back | Product Code **YS111H**

Features:

- ✓ High Back
- ✓ PU
- ✓ Adjustable Seat Height
- ✓ Free Float or Lock Mechanism
- ✓ Tension Adjustment

■ Available in black.



Dimensions:

	Seat Size	Back Size	Chair height to back	Chair height to seat	Seating Time	Carton Size	Carton Weight
YS20	565Wx495D	565W x 810H	1165mm – 1255mm	505mm – 595mm	8 hrs+	910 x 720 x 410	24Kg
YS111M	515Wx490D	505W x 575H	980mm – 1070mm	455mm – 545mm	4 – 8hrs	600 x 300 x 585	15.9Kg
YS111H	515Wx490D	505W x 700H	1095mm – 1185mm	455mm – 545mm	4 – 8hrs	715 x 315 x 585	16.5Kg

Product Code **YS05**

Titan | The Titan Chair combines luxury and strength. The sturdy construction and high quality materials satisfy the most demanding needs.

Soft leather cushioning the Titan is one of our most comfortable chairs, with it's pillow top cushioning, durability and strength the Titan is a chair you can immerse your body in for hours.



Titan Medium Back | Product Code **YS05M**

Features:

- ✓ Medium Back
- ✓ Leather/PU
- ✓ Adjustable Seat Height
- ✓ Fixed Padded Arms
- ✓ Free Float or Lock Mechanism
- ✓ Tension Adjust
- ✓ Chrome Base

■ Available in black.

5
YEAR
WARRANTY

200
kg USER
Rating



Titan High Back | Product Code **YS05H**

Features:

- ✓ High Back
- ✓ Leather/PU
- ✓ Adjustable Seat Height
- ✓ Fixed Padded Arms
- ✓ Free Float or Lock Mechanism
- ✓ Tension Adjust
- ✓ Chrome Base

■ Available in black.

5
YEAR
WARRANTY

200
kg USER
Rating

Dimensions:

	Seat Size	Back Size	Chair height to back	Chair height to seat	Seating Time	Carton Size	Carton Weight
YS05M	570Wx475D	590W x 650H	1060mm – 1135mm	540mm – 615mm	8 hrs+	850 x 785 x 410	21.6Kg
YS05H	575Wx475D	590W x 750H	1160mm – 1235mm	540mm – 615mm	8 hrs+	850 x 785 x 410	23.1Kg

Executive

5
YEAR
WARRANTY

120
kg USER
Rating

Cogra High Back |

Product Code **YS115H**

- ✓ Leather or PU
- ✓ High Back
- ✓ Adjustable Seat Height
- ✓ Infinite Tilt Lockable Mechanism
- ✓ Tension Adjustment
- ✓ Chrome Base
- ✓ Fixed Arms



Cogra Medium Back |

Product Code **YS115M**

All features as above, plus:

- ✓ Leather or PU
- ✓ Medium Back



Cogra Cantilever |

Product Code **YS115C**

- ✓ Leather or PU
- ✓ Cantilever Chair
- ✓ Fixed Arms

Cogra range available in black leather or white PU.

5
YEAR
WARRANTY

120
kg USER
Rating

Nordic High Back |

Product Code **YS125H**

- ✓ Leather or PU
- ✓ High Back
- ✓ Adjustable Seat Height
- ✓ Infinite Tilt Lockable Mechanism
- ✓ Tension Adjustment
- ✓ Chrome Base



Nordic Medium Back |

Product Code **YS125M**

All features as above, plus:

- ✓ Medium Back



Nordic Cantilever |

Product Code **YS125C**

- ✓ Leather or PU
- ✓ Cantilever Chair
- ✓ Fixed Seat Height

Nordic range available in black leather or white PU.

Dimensions:

	Seat Size	Back Size	Chair height to back	Chair height to seat	Seating Time	Carton Size	Carton Weight
YS115H	490W x 450D	475W x 645H	1075mm – 1150mm	445mm – 520mm	8 hrs+	960 x 375 x 655	17.5Kg
YS115M	490W x 450D	475W x 450H	895mm – 970mm	445mm – 520mm	8 hrs+	760 x 370 x 655	16.2Kg
YS115C	490W x 450D	475W x 450H	885mm	435mm	8 hrs+	770 x 410 x 520	14.7Kg
YS125H	490W x 450D	475W x 645H	1075mm – 1150mm	445mm – 520mm	8 hrs+	960 x 375 x 655	16.4Kg
YS125M	490W x 450D	475W x 450H	895mm – 970mm	445mm – 520mm	8 hrs+	760 x 370 x 655	15Kg
YS125C	490W x 450D	475W x 450H	885mm	435mm	8 hrs+	770 x 410 x 520	13.3Kg

Naples | Sleek European design a clever addition to any office.



Naples High Back |

Product Code **YS116H**

Features:

- ✓ High Back
- ✓ Padded Arms
- ✓ PU
- ✓ Tilt Lock Mechanism
- ✓ Aluminium Base

Available in black.

5
YEAR
WARRANTY

120
kg USER
Rating



Naples Cantilever |

Product Code **YS116C**

Features:

- ✓ Chrome Cantilever
- ✓ Padded Arms
- ✓ PU

Available in black.

5
YEAR
WARRANTY

120
kg USER
Rating

Naples Medium Back |

Product Code **YS116M**

Features:

- ✓ Medium Back
- ✓ Padded Arms
- ✓ PU
- ✓ Tilt Lock Mechanism
- ✓ Aluminium Base

Available in black.

5
YEAR
WARRANTY

120
kg USER
Rating



Dimensions:

	Seat Size	Back Size	Chair height to back	Chair height to seat	Seating Time	Carton Size	Carton Weight
YS116H	495Wx445D	460W x 645H	1095mm – 1160mm	455mm – 520mm	8 hrs+	900 x 380 x 600	13.80Kg
YS116M	495Wx445D	460W x 480H	930mm – 995mm	455mm – 520mm	8 hrs+	750 x 390 x 600	13.4Kg
YS116C	495Wx445D	460W x 470H	935mm	465mm	8 hrs+	770 x 460 x 520	10.8Kg

Executive



Aviator | Product Code **YS117**

Features:

- ✓ Fully Ergo 3 Task
- ✓ Ratchet Back
- ✓ Seat Slide
- ✓ Heavy Duty 3 Lever Mech



Aviator with Arms |

Product Code **YS117A**

All features as above, plus:

- ✓ Adjustable Arms
- Available in black.

Aero Mesh | Product Code **YS120**

Features:

- ✓ Fully Ergo 3 Task
- ✓ Height Adjustable Back
- ✓ Large Seat with Seat Tilt
- ✓ 3 Lever Mech



Aero Mesh with Arms |

Product Code **YS120A**

All features as above, plus:

- ✓ Adjustable Arms
- Available in black.

Dimensions:

	Seat Size	Back Size	Chair height to back	Chair height to seat	Seating Time	Carton Size	Carton Weight
YS117	485Wx460D	440W x 545H	975mm – 1075mm	470mm – 570mm	8 hrs+	670 x 415 x 580	15.5Kg
YS117A	485Wx460D	440W x 545H	975mm – 1075mm	470mm – 570mm	8 hrs+	671 x 415 x 580	15.5Kg
YS120/YS120A	520Wx490D	440W x 560D	1000mm – 1075mm	460mm – 580mm	8 hrs+	700 x 300 x 600	11.6Kg

Chairs

Product Code **YS43**

Sabina | Our Typist Chairs are cleverly designed for comfort.

The Sabina is our most popular chair. Fully ergonomic with 3 lever mechanism, molded seat and back for extra support and comfort. The Sabina is a 24/7 chair.



Sabina | Product Code **YS43A**

Features:

- ✓ No Arms
- ✓ Fabric Covering
- ✓ Adjustable Seat Height
- ✓ Lockable Seat Tilt
- ✓ Ratchet Adjustable Back
- ✓ Back Tilt Adjustment
- ✓ Molded Foam

Available in black, blue and grey.

5
YEAR
WARRANTY

120
kg USER
Rating



Sabina with Arms | Product Code **YS43B**

Features:

- ✓ Adjustable Arms
- ✓ Fabric Covering
- ✓ Adjustable Seat Height
- ✓ Lockable Seat Tilt
- ✓ Ratchet Adjustable Back
- ✓ Back Tilt Adjustment
- ✓ Molded Foam

Available in black, blue and grey.

5
YEAR
WARRANTY

120
kg USER
Rating

Sabina Drafting | Product Code **YS43D**

Features:

- ✓ Drafting Chair
- ✓ Fabric Covering
- ✓ Adjustable Seat Height
- ✓ Lockable Seat Tilt
- ✓ Ratchet Adjustable Back
- ✓ Back Tilt Adjustment
- ✓ Molded Foam

Available in black, blue and grey.

5
YEAR
WARRANTY

120
kg USER
Rating

Dimensions:

	Seat Size	Back Size	Chair height to back	Chair height to seat	Seating Time	Carton Size	Carton Weight
YS43A	500Wx480D	495W x 495H	945mm – 1075mm	480mm – 610mm	8 hrs+	610 x 320 x 585	15.1Kg
YS43B	500Wx480D	495W x 495H	945mm – 1075mm	480mm – 610mm	8 hrs+	610 x 320 x 585	18Kg
YS43D	500Wx480D	495W x 495H	1160mm – 1290mm	695mm – 825mm	8 hrs+	610 x 430 x 585	17.6Kg

Typist

16



Ashley | Product Code **YS01**

Features:

- ✓ Fixed Arms
- ✓ Mesh Back Fabric Seat
- ✓ Adjustable Seat Height
- ✓ Adjustable Seat Tilt



Ashley range, available in red, blue, green and black.

Lincoln | Product Code **YS21A**

Features:

- ✓ Fully Ergo Task Chair
- ✓ 3 Lever Mech
- ✓ Black upholstered Seat and Back
- ✓ Seat and Back Tilt
- ✓ Molded Foam



Lincoln with Arms |

Product Code **YS21B**

All features as above, plus:

- ✓ Adjustable Arms

Lincoln Drafting |

Product Code **YS21D**

All features as above, plus:

- ✓ Draft chair with Ring

Lincoln range available in black.



Dimensions:

	Seat Size	Back Size	Chair height to back	Chair height to seat	Seating Time	Carton Size	Carton Weight
YS01	480Wx425D	400W x 545H	870mm – 945mm	445mm – 520mm	8 hrs+	625 x 250 x 605	11.2Kg
YS21A	495Wx440D	455W x 420H	910mm – 1040mm	460mm – 590mm	8 hrs+	610 x 320 x 585	14.6Kg
YS21B	495Wx440D	455W x 420H	910mm – 1040mm	460mm – 590mm	8 hrs+	610 x 320 x 585	17.6Kg
YS21D	495Wx440D	455W x 420H	1125mm – 1255mm	675mm – 805mm	8 hrs+	610 x 430 x 585	17Kg

Chairs



Task | Product Code **YS07**

Features:

- ✓ No Arms
- ✓ Fabric
- ✓ Adjustable Seat Height
- ✓ Adjustable Back Height
- ✓ Adjustable Seat Tilt

Task with Arms |

Product Code **YS07A**

All features as above, plus:

- ✓ Adjustable Arms

Task Drafting |

Product Code **YS07D**

All features as above, plus:

- ✓ Draft chair with Ring



Task range, available in blue and black.

5
YEAR
WARRANTY

120
kg USER
Rating

Typist | Product Code **YS08**

Features:

- ✓ No Arms
- ✓ Fabric
- ✓ Adjustable Seat Height
- ✓ Adjustable Back Height
- ✓ Adjustable Seat Tilt

Typist with Arms |

Product Code **YS08A**

All features as above, plus:

- ✓ Adjustable Arms

Typist Drafting |

Product Code **YS08D**

All features as above, plus:

- ✓ Draft chair with Ring

■ Typist range available in black.

5
YEAR
WARRANTY

120
kg USER
Rating



Dimensions:

	Seat Size	Back Size	Chair height to back	Chair height to seat	Seating Time	Carton Size	Carton Weight
YS07	485Wx455D	430W x 385H	825mm – 955mm	485mm – 615mm	4 – 8hrs	610x320x 585	12Kg
YS07A	485Wx455D	430W x 385H	825mm – 955mm	485mm – 615mm	4 – 8hrs	611x320x 585	14.9Kg
YS07D	485Wx455D	430W x 385H	1080mm – 1210mm	700mm – 830mm	4 – 8hrs	611x320x 585	12Kg
YS08	480Wx445D	450W x 480H	865mm – 995mm	480mm – 610mm	8 hrs+	650x320x 585	12.65Kg
YS08A	480Wx445D	450W x 480H	865mm – 995mm	480mm – 610mm	8 hrs+	650x320x 585	15.6Kg
YS08D	480Wx445D	450W x 480H	1040mm – 1170mm	695mm – 825mm	8 hrs+	650x430x 585	15.1Kg



Eterna |

Product Code **YS0313**

Features

- ✓ Stackable
- ✓ Polypropylene Seat and Back
- ✓ Heavy Gauge Steel Frame

Eterna range available in black and white.



Dimensions

	Seat Size	Back Size	Chair height to back	Chair height to seat	Seating Time	Carton Size	Carton Weight
YS0313	430Wx430D	430W x 370H	815mm	445mm	4 – 8hrs	965 x 679 x 508	20Kg

Stacking



Stadium | Product Code **YS42**

Features:

- ✓ Stackable
- ✓ No Arms

■ Available in black.

5
YEAR
WARRANTY

110
kg USER
Rating



Apollo | Product Code **YS70**

Features:

- ✓ Stackable
- ✓ Fabric
- ✓ No Arms

■ Available in black.

5
YEAR
WARRANTY

110
kg USER
Rating

5
YEAR
WARRANTY

110
kg USER
Rating



Utility Stool | Product Code **YS119**

Features:

- ✓ PU
- ✓ Adjustable Seat Height

■ Available in black.

5
YEAR
WARRANTY

110
kg USER
Rating



Utility Drafting Stool |

Product Code **YS119D**

Features:

- ✓ PU
- ✓ Adjustable Seat Height

■ Available in black.

Dimensions:

	Seat Size	Back Size	Chair height to back	Chair height to seat	Seating Time	Carton Size	Carton Weight
YS42	460Wx440D	455W x 315H	830mm	440mm	4 – 8hrs	N/A	5.1Kg
YS70	475Wx410D	480W x 330H	780mm	480mm	4 – 8hrs	660 x 600 x 126	23Kg (4pcs)
YS119	405Wx405D	N/A	N/A	515mm – 665mm	4 – 8hrs	610 x 180 x 580	6.8Kg
YS119D	405Wx405D	N/A	N/A	660mm – 800mm	4 – 8hrs	610 x 180 x 580	6.8Kg

Stacking



Stacking Visitor Chair I

Product Code **YS11A**

Features:

- ✓ Stackable
- ✓ Fabric
- ✓ Fixed Arms

5 YEAR WARRANTY

120 kg USER Rating

Available in black and blue.



Stacking Visitor Chair I

Product Code **YS11B**

Features:

- ✓ Stackable
- ✓ Fabric
- ✓ Fixed Arms

5 YEAR WARRANTY

120 kg USER Rating

Available in black and blue.



Bronte I

Product Code **YS09**

Features:

- ✓ PU
- ✓ Not stackable
- ✓ Padded Fixed Arms

5 YEAR WARRANTY

120 kg USER Rating

Available in black.



Gamma I

Product Code **YS12**

Features:

- ✓ PU
- ✓ Padded Fixed Arms
- ✓ 4 Chairs to a Carton

5 YEAR WARRANTY

120 kg USER Rating

Available in black.



Monacco I

Product Code **YS112**

Features:

- ✓ PU
- ✓ Padded Fixed Arms
- ✓ 4 Chairs to a Carton

5 YEAR WARRANTY

120 kg USER Rating

Available in black.



Client I

Product Code **YS10B**

Features:

- ✓ Leather/PU
- ✓ Not stackable
- ✓ Padded Fixed Arms

5 YEAR WARRANTY

120 kg USER Rating

Available in black.



Plastic Stacker I

Product Code **YS32**

Features:

- ✓ Plastic
- ✓ No Arms
- ✓ Stackable

5 YEAR WARRANTY

120 kg USER Rating

Available in grey.

Dimensions:

	Seat Size	Back Size	Chair height to back	Chair height to seat	Seating Time	Carton Size	Carton Weight
YS09	500Wx470D	500W x 465H	900mm	445mm	4 – 8hrs	840 x 195 x 545	10.5Kg
YS10B	505Wx510D	520W x 330H	875mm	480mm	4 – 8hrs	900 x 530 x 220	11.8Kg
YS11A	470Wx470D	475H x 400H	875mm	470mm	4 – 8hrs	705 x 485 x 185	8Kg
YS11B	470Wx470D	475H x 400H	875mm	470mm	4 – 8hrs	675 x 485 x 185	7Kg
YS12	505Wx455D	510W x 500H	945mm	470mm	4 – 8hrs	840 x 450 x 580	38.4Kg
YS32	435Wx400D	435W x 430H	825mm	440mm	4 – 8hrs	N/A	4.4Kg
YS112	510Wx480D	510W x 550H	1000mm	525mm	4 – 8hrs	850 x 750 x 585	45.9Kg(4pcs)

Massage

21

Product Code **MCo1**

Relaxa | Zero gravity: the perfect ergonomic position allowing you to immerse yourself into a full and relaxed body massage.

A massage chair that looks great in any room of your home or office.



Relaxa | Product Code **MCo1-1**

Features:

- ✓ Four automatic massage programs
- ✓ Seven (7) adjustable heights for massaging
- ✓ Seat massage with concealed airbags that inflate and deflate allowing muscles to relax to the posterior and thighs
- ✓ Retractable foot and calf massage with added foot vibration to allow for greater blood circulation, with the option of a rotating ottoman
- ✓ Adjustable kneading width to foot massager
- ✓ Head cushion can also be used as a lumbar support cushion to soften the lower back massage
- ✓ Individual massage intensity for neck and shoulder, back and lower back
- ✓ Automatic body height detection allowing for correct position of massaging
- ✓ Removable head cushion for a deep neck massage
- ✓ 15 minute built in timer
- ✓ Buy with confidence with a three (3) year warranty

■ Available in black.



Reception

Reception Seating | Make a lasting first impression with our stylish range of reception seating.

Our reception seating offers a cost effective solution to your reception requirements. All our reception seating is backed by a one year warranty.

5
YEAR
WARRANTY

Tub Range |

Product Code **YS900-1**

Product Code **YS900-2**

Features:

- ✓ Single and Two Seater
- ✓ Black PU upholstery

5
YEAR
WARRANTY

Leo Chair |

Product Code **YS700**

Features:

- ✓ Single Seater
- ✓ Black PU
- ✓ Timber Base and Legs



Sienna Range |

Product Code **Single YS901**

Product Code **Two Seater YS902**

Product Code **Three Seater YS903**

Features:

- ✓ Single, Two or Three Seater
- ✓ Black PU Upholstery
- ✓ Steel Chrome External Frame

5
YEAR
WARRANTY

	Chair height to back	Width	Depth	Carton Size	Carton Weight
YS900-1	770mm	460mm	490mm	725 x 680 x 790	19.8Kg
YS900-2	770mm	980mm	490mm	123 x 680 x 790	30Kg
YS700	730mm	655mm	705mm	525 x 585 x 650	14.7Kg
YS901	795mm	595mm	515mm	910 x 830 x 730	33.5Kg
YS902	795mm	1200mm	515mm	151 x 830 x 730	45.5Kg
YS903	795mm	1800mm	530mm	208 x 830 x 730	57Kg



Logan

Logan Commercial Office Furniture is available in two colour combinations.

Logan | Cost effective and practical. It's easy to build your ideal work space with Logan.

The Logan Range is strong and practical. All Logan Shelves are 25mm thick providing extra support and strength. With a variety of colour options and various sizes available the "Logan" has all the pieces needed to fit out any modern office. All desks have pre-drilled cable point entries and all drawer units and cupboards are fitted with locks as standard. All backed by the YS Design Commercial Office Furniture 5 year Warranty.



Beech/ Ironstone



White/ Ironstone

Features

- ✓ Durable Shock Absorbent PVC Edges
- ✓ Adjustable Feet
- ✓ Full range available in Beech & White
- ✓ 25mm Tops, Side Panels and Shelves





Straight Desk

- ✓ Cable Holes

	Height	Width	Depth
DK157	730mm	1500mm	750mm
DK187	730mm	1800mm	750mm
DK189	730mm	1800mm	900mm

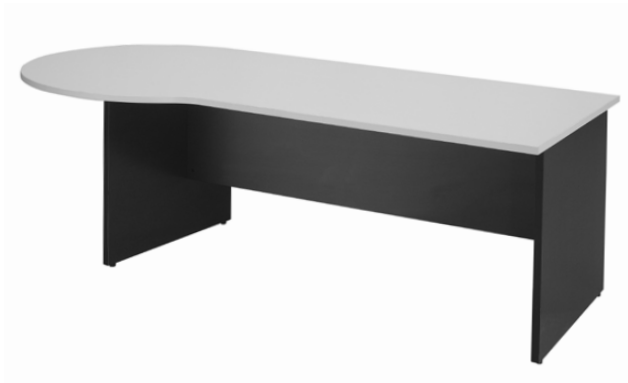
Drawer Box | DF

- ✓ Fixed Pedestal
- ✓ 1 Drawer, 1 File

Drawer Box | D3

- ✓ Fixed Pedestal
- ✓ 3 Drawer

	Height	Width	Depth
DF	450mm	476mm	470mm
D3	450mm	476mm	470mm



P End Desk | DKP21

- ✓ Reversible Left or Right Hand

	Height	Width	Depth
DKP21	730mm	2100mm	900/1200mm

Bow Front Desk | DKBF18

- ✓ Cable Holes

	Height	Width	Depth
DKBF18	730mm	1800mm	1050mm



Student Desk with Drawers | DKS126

Student Drawer Boxes separate

	Height	Width	Depth
DKS126	730mm	1200mm	600mm



Corner Workstation |

Image shown: CW186
(CW + R69 + R69 + DF + MP)

✓ Cable Hole

	Height	Width	Depth
CW186	730mm	1800 x 1800mm	600mm
CW1875	730mm	1800 x 1800mm	750mm



Corner Unit | CW69

✓ Cable Holder

	Height	Width	Depth
CW69	730mm	900 x 900mm	600mm
CW759	730mm	900 x 900mm	750mm



Reversible Return |

Image shown: R612

	Height	Width	Depth
R66	730mm	600mm	600mm
R69	730mm	900mm	600mm
R612	730mm	1200mm	600mm



Reversible Return |

Image shown: R759

	Height	Width	Depth
R756	730mm	600mm	750mm
R759	730mm	900mm	750mm
R7512	730mm	1200mm	750mm



Meeting Table |

Image shown: MT12

	Diameter	Height
MT09	900mm	730mm
MT12	1200mm	730mm



Boat Conference |

Image shown: CT24

	Height	Width	Depth
CT24	730mm	1200mm	2400mm

Features

- ✓ Durable Shock Absorbent PVC Edges
- ✓ Adjustable Feet
- ✓ Full range available in Beech & White
- ✓ 25mm Tops, Side Panels and Shelves



Image shown: Credenza and hutch

Hutch and Doors I

	Height	Width	Depth
HU18D	1075mm	1800mm	300mm



Image shown: Credenza and hutch with doors

Logan | With storage space an essential ingredient of a successful office we have all your storage solutions covered.

Hutch I

- ✓ 25mm Adjustable Shelves

	Height	Width	Depth
HU12	1075mm	1200mm	315mm
HU15	1075mm	1500mm	315mm
HU18	1075mm	1800mm	315mm

Credenza I

- ✓ 25mm Adjustable Shelves
- ✓ Lockable

	Height	Width	Depth
CZ12	730mm	1200mm	450mm
CZ15	730mm	1500mm	450mm
CZ18	730mm	1800mm	450mm



Reception Counter I

	Height	Width	Depth
REST18	1090mm	1800mm	1160mm



Reception Hob I

Image shown: Desk with Return and Reception Hob, Mobile Pedestal and Drawer Box

	Height	Width	Depth
HOB185	450mm	1800mm	3000mm
HOB15	450mm	1500mm	3000mm

Furniture



Half Door Storage Unit
| HC

Full Door Storage Unit
| FD

Half Door Stationery Cupboard
| HD

- ✓ 3 x 25mm Adjustable Shelves and 1 Fixed Shelf
- ✓ Lockable

	Height	Width	Depth
HC	900mm	900mm	450mm
FD	1800mm	900mm	450mm
HD	1800mm	900mm	450mm



Filing Cabinet
| FC4, FC3, FC2

- ✓ Drawers with Double Extension Runners
- ✓ Lockable Drawers

	Height	Width	Depth	Drawers
FC2	715mm	476mm	550mm	2
FC3	1029mm	476mm	550mm	3
FC4	1339mm	476mm	550mm	4



Bookcase I

- ✓ 25mm Adjustable Shelves

	Height	Width	Depth
BC18	1800mm	900mm	315mm
BC12	1200mm	900mm	315mm
BC09	900mm	900mm	315mm



Mobile Pedestal
| MP, MP4

Lateral File
| LF7856

- ✓ Castors
- ✓ Adjustable Feet

	Height	Width	Depth
MP	676mm	476mm	470mm
MP4	676mm	476mm	470mm
LF7856	750mm	780mm	560mm

Summit I a modern and versatile series which includes Workstations and Desks, Flip tables, Round meeting table, Modern peds and the Electric Sit to Stand desk.

The colour range of silver, black and white will create a modern and open look in any office environment.



Summit 4 Person Corner Desk Combination

- ✓ 4 x YSSCW157 Summit Corner Workstation

Features

- ✓ Durable Shock Absorbent PVC Edges
- ✓ Adjustable Feet
- ✓ Full range available in Beech & White



The Summit Range desk colours.



Tops: Beech / White

Frame: Silver / White / Black

Summit Range



Summit Desk Combination

- ✓ DKT157 Summit Desk
- ✓ Summit Mobile Pedestal
- ✓ YS13 Miami Chair



Summit Corner Workstation I

Product Code **YSSCW157**

- ✓ 1 x DKTC157, 3 x YSMSL Legs, 2 x Cable Beam
- ✓ 1 x Cable hole

Product Code **YSSCW1875**

Wider desk option:

- ✓ 1 x DKTC1875



Summit range available in Silver, White or Black.



Summit Desk I

Product Code **YSSD15**

- ✓ 1 x DKT157, 2 x YSMSL Legs, 1 x Modesty Panel or Cable Beam
- ✓ Desk top has cable holes

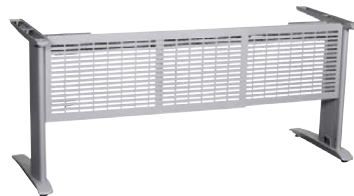
Product Code **YSSD18**

Wider desk option:

- ✓ 1 x DKT1875



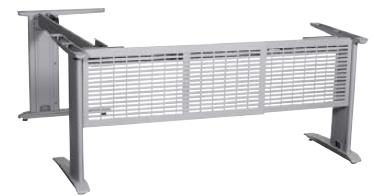
Summit range available in Silver, White or Black.



Summit Desk Frame only I

Product Code **YSMDF**

- ✓ 2 x YSMSL Legs, 1 x MEP
- ✓ Length Extendable



Summit Corner Frame only I

Product Code **YSMDF-R**

- ✓ 3 x YSMSL Legs, 1 x MEP, 2 x MB Cable Beams
- ✓ Length Extendable

Dimensions:

	Height	Width	Depth
YSSD15	725mm	1500mm	750mm
YSSD18	725mm	1800mm	750mm
YSSCW15	725mm	1500x 1500mm	750mm
YSSCW18	725mm	1800x 1800mm	750mm



Summit Electric Sit to Stand Corner |

Product Code **YSSSE2C-15**

- ✓ 1 x DKTC157, 1 x YSSSE2 + YSSSE2C Frame
- ✓ Desk top has cable holes
- ✓ Preset Height Remote

Product Code **YSSSE2C-18**

Wider desk option:

- ✓ 1 x DKTC1875, 1 x YSSSE2 + YSSSE2C Frame

Summit tops, available in Beech or White.

Summit Electric Sit to Stand Desk |

Product Code **YSSSE2-15**

- ✓ 1 x DKT157, 1 x YSSSE2 Frame
- ✓ Desk top has cable holes
- ✓ Preset Height Remote

Product Code **YSSSE2-18**

Wider desk option:

- ✓ 1 x DKT1875, 1 x YSSSE2 Frame

Summit tops, available in Beech or White.



Corner Sit to Stand Frame only |

Product Code **YSSSE2 + YSSSE2C**

- ✓ Desk plus return frame



Desk Sit to Stand Frame only |

Product Code **YSSSE2**

Summit range, available in Silver, Black or White.



Dimensions:

	Height	Width	Depth
YSSSE2C15	720-1160mm	1500x1500mm	750mm
YSSSE2C18	720-1160mm	1800x1800mm	750mm
YSSSE215	720-1160mm	1500x1500mm	750mm
YSSSE218	720-1160mm	1800x1800mm	750mm

Range



Summit Round Meeting Table Combination

- ✓ 1 x YSMMT9
- ✓ 4 x YS42 Stadium Chair



Summit Flip Top |

Product Code **YSMFT15**

- ✓ 1 x YSMTT157, 1 x YSMFT Frame
- ✓ No Cable Hole



Product Code **YSMFT18**

- ✓ 1 x YSMTT1875, 1 x YSMFT Frame



Summit Round Meeting Table |

Product Code **YSMMT9**

- ✓ 1 x 900mm, 1 x YSMSB
- ✓ Silver Powder Coated Frame only

Base only |

Product Code **YSMSB**

- ✓ YSMSB Base only

Dimensions:

	Height	Width	Depth
YSMFT15	745mm	1500mm	750mm
YSMFT18	745mm	1800mm	750mm
YSMMT9	745mm	900mm	900mm
YSMMP	620mm	400mm	520mm

Frame only | Product Code **YSMFT**

- ✓ Silver Powder Coat available only



Summit Mobile Pedestal |

Product Code **YSMMP**

- ✓ 2 drawer + file
 - ✓ pop in lockable castor
- Summit range, available in Silver, Black or White.

Components



Straight Tops with Cable Holes

Product Code **DKT157**

Product Code **DKT1875**

Product Code **DKT189**

Straight Tops with no Cable Holes

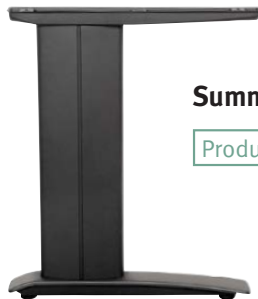
Product Code **YSMTT157**

Product Code **YSMTT1875**

Summit Corner Desk Top

Product Code **DKTC157**

Product Code **DKTC1875**



Summit C Leg

Product Code **YSMSL**



Summit Beams

Product Code **YSMB**

Product Code **YSMBR**

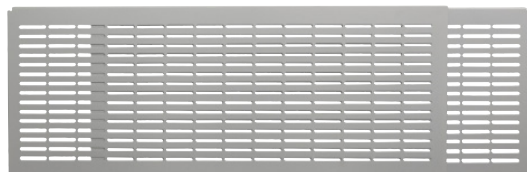
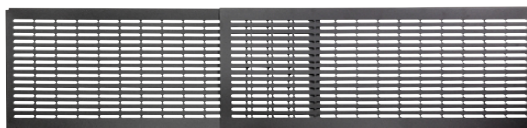
Summit Fixed Strengthen Beams

Product Code **YSSB1200**

Product Code **YSSB1500**

Summit Extendable Modesty Panel

Product Code **YSMEP**



Summit range, available in Silver, Black or White.



**Ventura Complete
Desk Combination
| VP6157SC**

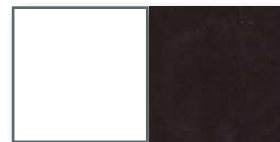
Ventura Range

Ventura Range | a Modern, yet Simple workstation system made for today's office environment. With the Ability to have a Single desk or pods of 2, 4, 6 and so on, it creates a community of hubs in the office space.

With features of a Shared leg, low desk mounted screen option and frame colours in both Black or White with Adjustable Beams, its the system ready to work for you.

The Ventura Range frame colours.

Frames: White/ Black



Complete



Single Complete Desk with Screen

Product Code **VD157SC**

✓ Single Desk and Screen

Product Code **VD1875SC**

✓ Single Desk and Screen



2 person Complete Pods with Screen

Product Code **V2P157SC**

✓ 2P Desk and Screen

Product Code **V2P1875SC**

✓ 2P Desk and Screen

4 person Complete Pods with Screen

Product Code **V4P157SC**

✓ 4P Desk and Screen

Product Code **V4P1875SC**

✓ 4P Desk and Screen



6 person Complete Pods with Screen

Product Code **V6P157SC**

✓ 6P Desk and Screen

Product Code **V6P1875SC**

✓ 6P Desk and Screen

Extra 2 person (8+ person) Complete Pods with Screen

Product Code **VEP157SC**

✓ 2P Desk and Screen

Product Code **VEP1875SC**

✓ 2P Desk and Screen

Ventura frames available in Black or White.

Dimensions:

	Height	Width	Depth
VD157SC	745mm	1500mm	750mm
V2P157SC	745mm	1500mm	1500mm
V4P157SC	745mm	3000mm	1500mm
V6P157SC	745mm	4500mm	1500mm

Complete Ventura Desk Combination

✓ V4P157SC Ventura Desk



Single Complete Desk with Top

Product Code **VD157**

✓ 1 x DKT157, 1 x VFS

Product Code **VD1875**

✓ 1 x DKT1875, 1 x VFS

2 Person Complete Pod with Top

Product Code **V2P157**

✓ 2 x DKT157, 1 x VF2

Product Code **V2P1875**

✓ 2 x DKT1875, 1 x VF2



4 Person Complete Pod with Top

Product Code **V4P157**

✓ 4 x DKT157, 1 x VF4

Product Code **V4P1875**

✓ 4 x DKT1875, 1 x VF4

6 Person Complete Pod with Top

Product Code **V6P157**

✓ 6 x DKT157, 1 x VF6

Product Code **V6P1875**

✓ 6 x DKT1875, 1 x VF6

Extra 2 Person (8+ person) Complete Pod with Top

Product Code **VEP157**

✓ 2 x DKT157, 1 x VFE2

Product Code **VEP1875**

✓ 2 x DKT1875, 1 x VFE2

Ventura frames available in Black or White.

Dimensions:

	Height	Width	Depth
VD157	745mm	1500mm	750mm
V2P157	745mm	1500mm	1500mm
V4P157	745mm	3000mm	1500mm
V6P157	745mm	4500mm	1500mm

Ventura



Single Frame

Product Code **VF5**

2 Person Frame

Product Code **VF2**



4 Person Frame

Product Code **VF4**



6 Person Frame

Product Code **VF6**

Extra 2 Person Frame (8+ person)

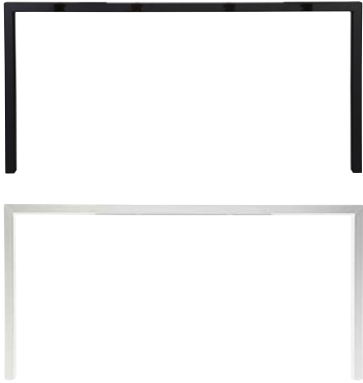
Product Code **VFE2**

Ventura range, available in Silver or White.

Ventura Complete Desk Combination

✓ V2P157SC Ventura Desk

Components



Ventura Double End Leg

Product Code **VFL1500**

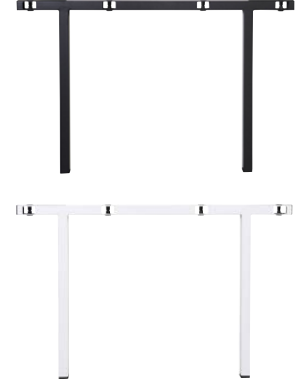
✓ Extendable 1400 – 1800mm



Ventura Single End Leg

Product Code **VFL750**

✓ Extendable 1400 – 1800mm



Ventura Centre Shared Leg

Product Code **VFLC750**

✓ Extendable 1400 – 1800mm



Ventura Beam

Product Code **VFB1**

✓ Extendable 1400 – 1800mm

Ventura range, available in Silver or White.



5 Star Chrome Base



5 Star Nylon Base



Castor



Glide



Adjustable Arm



Drafting Kit



Gaslift Chrome



Gaslift



Hunter Office Supplies

Unit 1/31 Alliance Avenue, Morisset NSW 2264

sales@hunterofficesupplies.com.au

www.hunterofficesuppliesmorisset.com.au

P 02 4973 1313

F 02 4973 6035

